



GLOBES

COLLECTION

As the great explorers gradually discovered and charted more and more of our planet, and countries laid claim to various territories, there was a continuing need to re-document it all. With this, the incredible art of globe-making thrived. Such was the beauty and historical significance of outdated versions, these have become desirable decorative objects.

A world leader in antique globe reproduction, Authentic Models replicates the complex gravure printing technique which was developed to display the fine details these reference works required. Our collection represents five centuries of globe development by some of the greatest names in cartography, tastefully mounted on sympathetically designed stands to bring old world charm into even the most modern of settings.



Hand applied gores from the famous Dutch cartographer, Gerardus Mercator, engraved charts from 1541. Made in cooperation with the Royal Library in Bruxelles.



Griffin Globe
GL053 Ø 18.5 x 39.5cm,
7.25 x 15.5"



Vaugondy Globe 1745, SMALL
GL027 Ø 8.5 x 9cm, 3.25 x 3.5"
Gift Packaged



The Age of Exploration
GL031 Ø 8.5 x 10.5cm, 3.25 x 4.25"
Gift Packaged



The Earth & The Heavens 1551
GL032 Ø 8.5 x 10.5cm, 3.25 x 4.25"
Gift Packaged



1921 USA Globe Weber Costello
GL026 Ø 34.5 x 61cm, 13.5 x 24"

Trianon Globe
GL045 Ø 14 x 26.25cm, 5.5 x 10.25"



Globe Bookends
GL009F Ø 8.5 x 10.5cm, 3.25 x 4.25"



Navigator's Terrestrial Globe, FRENCH FINISH
GL023F Ø 26.5 x 29.75cm, 10.25 x 11.75"



Desktop Globe
GL042 Ø 11 x 19.5cm, 4.25 x 7.75"



Versailles Globe
GL044 Ø 14 x 26.25cm, 5.5 x 10.25"



Terrestrial Globe with Compass
GL019 Ø 14.5 x 21cm, 5.75 x 8.25"



Library Globe

GL047 Ø48 x 96cm, 19 x 37.75"

No Renaissance library, reception room, or merchant's office was complete without a large globe on a stand. Mapmakers and globe publishers issued new globes every year, keeping clients up to date on the latest discoveries and explorations. New trade routes, new ports or even new continents.



Classic Globe Chicago, 1887

GL055 Ø18 x 30.5cm, 7.1" x 12"



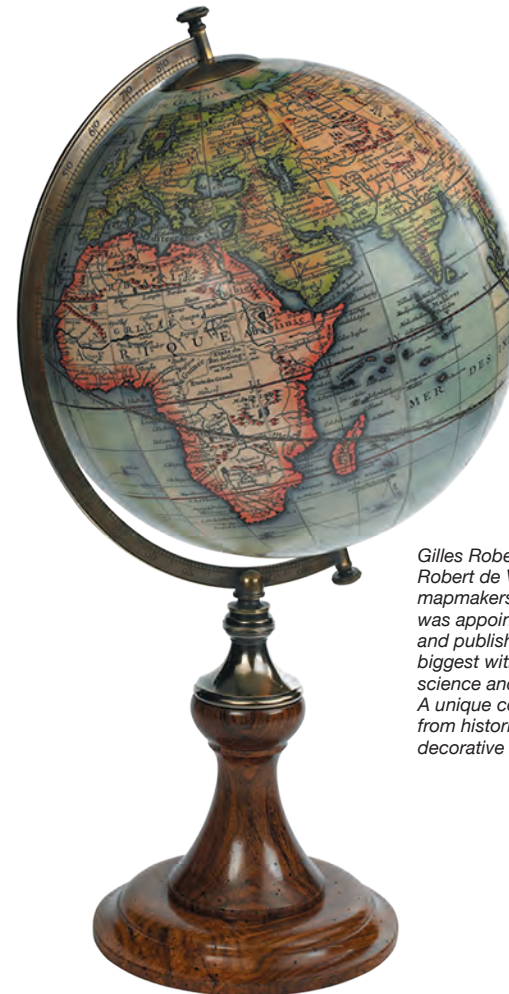
Bronze Armillary Dial

GL052 Ø 18.5 x 36.5cm, 7.5 x 14.5"



18th C. Atlas Armillary

GL051 Ø 25.5 x 56cm, 10 x 22"



Vaugondy 1745 CLASSIC STAND

GL008D Ø 34.5 x 61cm, 13.5 x 24"



Vaugondy Baroque

GL048 Ø 32 x 55cm, 12.75 x 21.75"



Mini Terrestrial Globe

GL015 Ø 12 x 22cm, 5.8 x 9.1"



Vaugondy Globe 1745

GL021F Ø 14 x 29.5cm, 5.5 x 11.75"



Atlas Globe

GL049 M. 18.5 x 20 x 34cm, 7.25 x 8 x 13.5"

Gilles Robert de Vaugondy and his son, Didier Robert de Vaugondy, were the leading mapmakers in France during the 1700s. Didier was appointed geographer to Louis XV in 1760 and published globes of various sizes, the biggest with a diameter of 2.6 meters. Carrying science and history into the world of home décor. A unique combination of classic globe replica from historical cartography with spectacular decorative stands.





Vaugondy 1745, BLACK
GL041 Ø 32 x 50cm, 12.5 x 19.75"



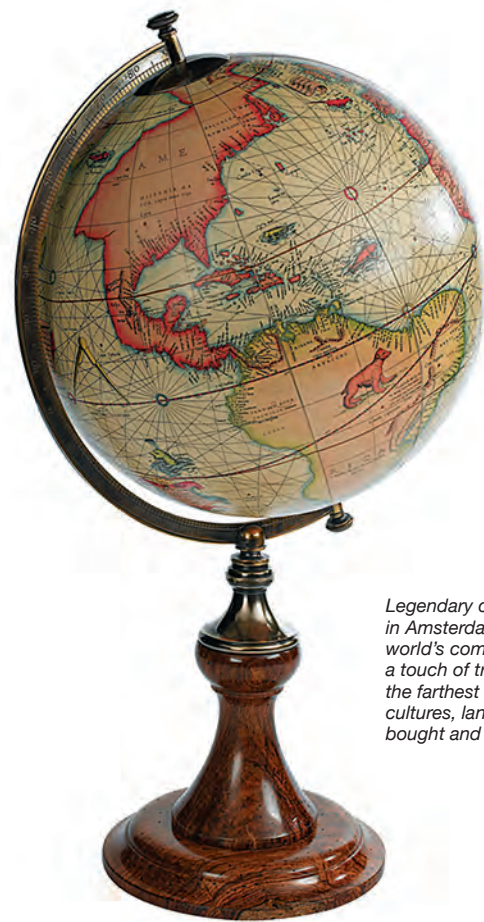
The world in 1921, roaring and still colonial. The Weber Costello globe is displayed on an ebonized wood stand. Colored gores are applied to the globes by hand with authentic construction and detail which transforms them into contemporary classics.

Weber Costello Globe
GL036 Ø 32 x 50cm, 12.5 x 19.75"



1920s Globe 32cm
GL043 Ø 32 x 50cm, 12.5 x 19.75"





Mercator 1541 CLASSIC STAND
GL002D Ø 34.5 x 61cm, 13.5 x 24"

Legendary cartographer, Jodocus Hondius, worked in Amsterdam during the 1600s, then one of the world's commercial hubs. Spin the world and enjoy a touch of true history. Galleons sailing oceans to the farthest corners of the then known world. Exotic cultures, languages, people and goods to be traded, bought and sold. Gold and ivory, spices and silks.



Hondius 1627, CLASSIC STAND
GL003D Ø 34.5 x 61cm, 13.5 x 24"



Dragon Globe
GL054 Ø32 x 53.5cm, 12.75 x 21"



Globe Base, ALUMINUM
GL200A Ø 11 x 1.5cm, 4.5 x .75"
14 or 18cm globe sold separately



Globe Base, WOOD
GL200 Ø 11 x 1.5cm, 4.5 x .75"
14 or 18cm globe sold separately



Globe Base, BRONZE
GL200B Ø 11 x 1.5cm, 4.5 x .75"
14 or 18cm globe sold separately



Stand for Globe
GL000 Ø 11 x 17.5cm, 4.25 x 7"
8.5cm globe sold separately



Tripod Stand
GL300A M. 16 x 15.5 x 20cm,
6.25 x 6 x 8"
14 or 18cm globe sold separately



Great accessory to hold any of our small globe keepsakes as it can be put in two different positions.



Vaugondy, COLOR 14cm
GL213 Ø 14cm, 5.5"



Vaugondy, BLACK 14cm
GL211 Ø 14cm, 5.5"



Vaugondy, IVORY 14cm
GL212 Ø 14cm, 5.5"



Weber Costello 18cm
GL313 Ø 18cm, 7"

Vaugondy, BLACK 18cm
GL311 Ø 18cm, 7"

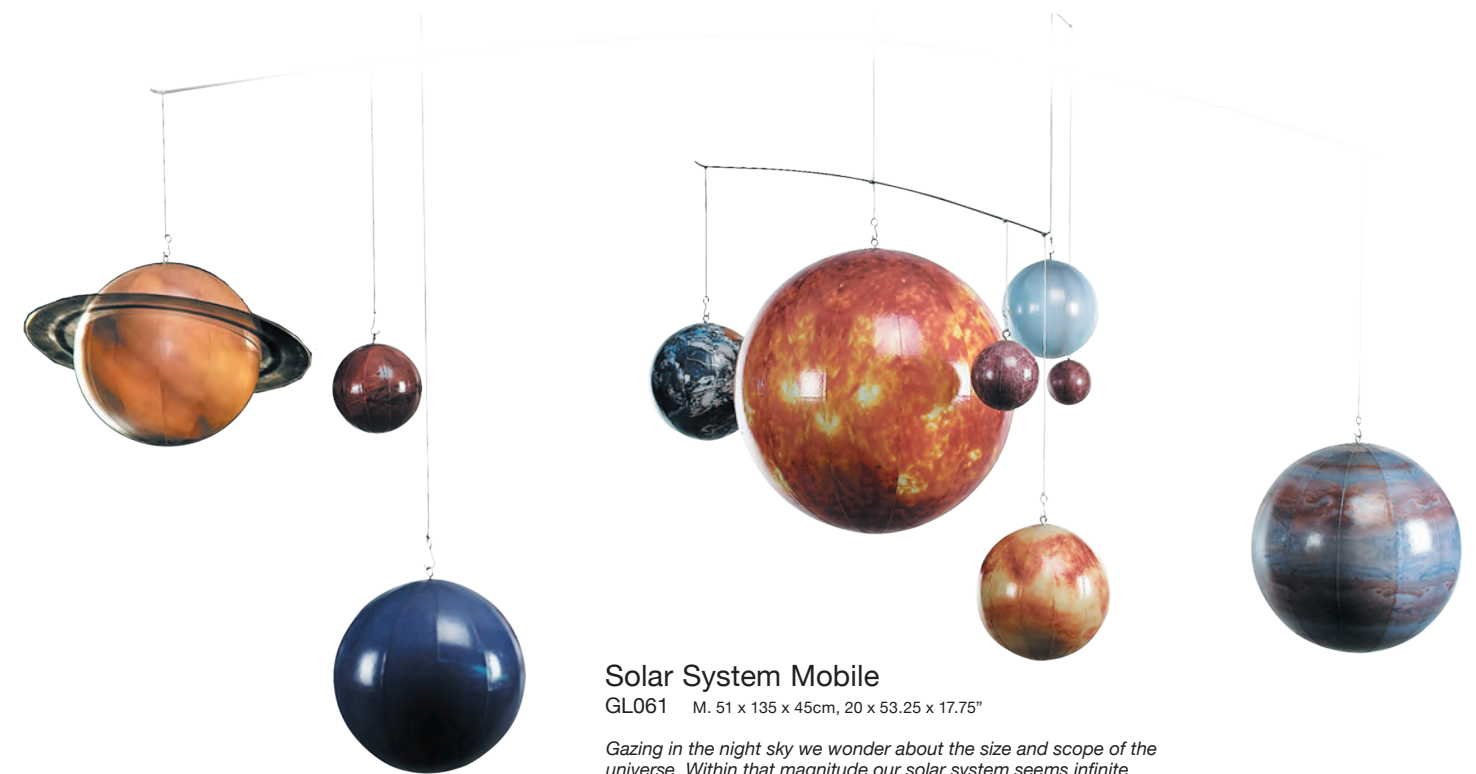
Vaugondy, IVORY 18cm
GL312 Ø 18cm, 7"



Globe Mobile

GL060 M. 108 x 18 x 90cm 42.5 x 7 x 35.5"

Five different globes from five centuries, symbolizing the advancement of cartography, the gradual pushing back of boundaries. Seemingly a magic object, many earth globes moving in perpetual circles. Different style globes in colors, hues and specifications make a fascinating and elegant object. Sure to arouse interest in planets and their clockwork movements in a curious child's mind, it may at the same time bring about sleep in a drowsy mind, watching its hypnotic pattern.



Solar System Mobile

GL061 M. 51 x 135 x 45cm, 20 x 53.25 x 17.75"

Gazing in the night sky we wonder about the size and scope of the universe. Within that magnitude our solar system seems infinite and overwhelming. It's easier to understand native creation myths, Newtonian and Galilean theories, and great historical discoveries when viewing the solar system on a smaller, more comprehensible human scale. Reduced to both scientific and decorative models of our planetary system, revolving around the sun and not the earth as early scientists believed.