



NAUTICAL COLLECTION

Endeavour, adventure and sheer joy on the water has meant many different things to different people through the ages. The vast array of different vessels which have sailed the seas and mastered inland waterways hold meaningful connections to explorers, immigrants, leisure travellers and sportspeople alike. Authentic Models' accurate models of sailing ships, steamers, runabouts and decorative oars bring beauty to interior spaces while evoking emotions connected with golden eras of water transport.





Dragon Olympic Sail Racer
AS078F M. 76.5 x 18 x 99cm, 30 x 7 x 39"

Classic Olympic racer from the 1930s is still popular today. Beautiful mahogany planked hull. Built from approved racing class blueprints. Hands-on sailing history for lovers of wooden craft. This is a real scale model, a miniature of a legendary regatta racer. Cotton sails and lines with a French finished hull. Easy to assemble.



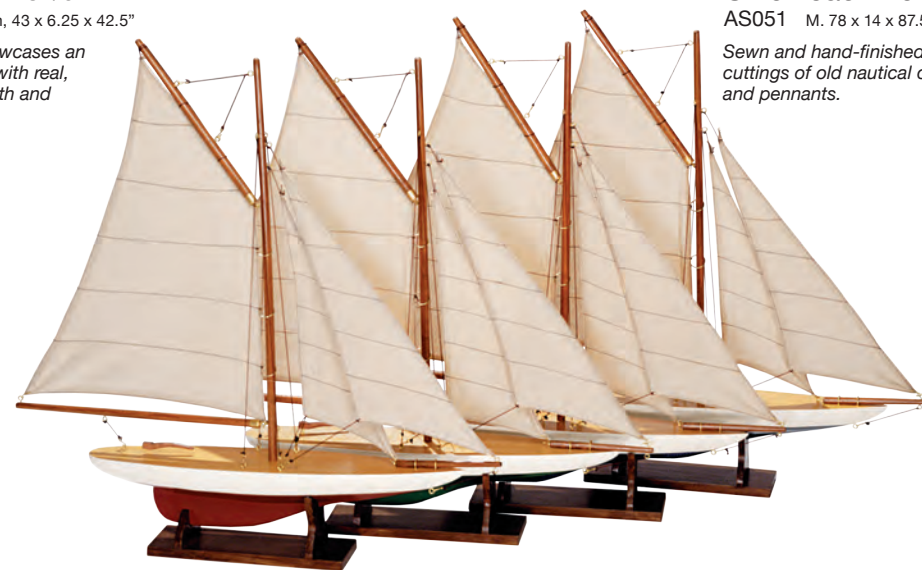
Sail Model 1901, BLUE/GREEN
AS050 M. 109 x 16 x 108cm, 43 x 6.25 x 42.5"

This classic pond yacht showcases an era when children grew up with real, hands-on objects to play with and learn from.



Union Jack Pond Yacht
AS051 M. 78 x 14 x 87.5cm, 30.75 x 5.5 x 34.5"

Sewn and hand-finished sails represent cuttings of old nautical country flags and pennants.



Mini Pond Yachts, Set of 4
AS057A M. 51 x 8 x 50cm, 20 x 3.25 x 19.75"



1930s Classic Yacht, LARGE
AS135 M. 54.5 x 12.75 x 59.75cm, 21.5 x 5 x 23.5"



1930s Classic Yacht, SMALL
AS134 M. 54.5 x 12.75 x 59.75cm, 21.5 x 5 x 23.5"

A sailor's dream, attractive and well proportioned. This classic 1930s yacht model is a beauty. Clean and crisp sails, bronze portholes and lots of nice details. Available in two sizes.

Ranger, the 1937 A-Cup contender, in original colors of red and white. Clean white sails, detailed stitching. Great Home Décor.



J-Yacht 'Ranger' 1937
AS150 M. 69 x 14 x 89cm, 27.25 x 5.5 x 35"



J-Yacht, GREY
AS153 M. 69 x 14 x 89cm, 27.25 x 5.5 x 35"



J-Yacht 'Rainbow' 1934
AS152 M. 69 x 14 x 89cm, 27.25 x 5.5 x 35"



America's Cup Columbia, LARGE
AS075F M. 173 x 23 x 166.5cm, 68 x 9 x 65.5"



America's Cup Columbia, MEDIUM
AS076F M. 114.5 x 18 x 118.5cm, 45 x 7 x 46.75"



America's Cup Columbia, SMALL
AS108F M. 94 x 13 x 90cm, 37 x 5 x 35.5"



Newport Sloop
AS168 M. 46 x 17.5 x 21.25cm, 18.25 x 7 x 8.5"



Yacht 'Ironside', SMALL
AS167 M. 46 x 17.5 x 21.25cm, 18.25 x 7 x 8.5"

If you are looking for a model ship with tremendous appeal, look no further. Consider this: it's nautical, it's an antique toy and it's built plank-on-frame. Not too small and not too big. Most of all it's a tremendous value. All wood, walnut finished, brass antique hardware, tea stained sails, complete with stand and cast-iron original issue keel weight.

The tranquil simplicity of our America's Cup yacht models capture the spirit of classic sailing ponds. Le Lac in the Bois de Boulogne. The Serpentine in Hyde Park. The boat pond in Central Park N.Y. Classic sepia photographs of boater hatted Dads launching their sons' toy boats into dark waters, hoping for a speedy return. Beach visits with tin metal-pails to collect shells and sand. A boat model to sail the rippled ocean water between high and low tide. They leave cherished memories of both tranquil and exciting moments.





Aquarama
AS182 M. 64 x 20 x 19cm,
25.25 x 7.75 x 7.5"

Plaything of the very rich back in the 1950s. The Côte d'Azur, Cannes, Monaco, Lago di Como... A beautiful model to remind you of that elusive dream.



Thunderboat
AS184 M. 80 x 30 x 23cm,
31.5 x 11.75 x 9"

Impeccable quality is evident in the leather seats, wood stand and chrome details. Includes squared windshield, steering wheel and gauges. Hmm... you'd probably love to move the throttle and roar out to open water...



Triple Cockpit
AS183 M. 64 x 20 x 19cm,
25.25 x 7.75 x 7.5"

The throaty growl of that big engine built inside gleaming mahogany, rich leather, chrome trim. Leather padded seats displayed movie stars trying out the new bikini fashions. Husband number 3, 4, or 5 behind the wheel, decked out in spotless captain's finery. No Coast Guard was able to overtake these sleek twin-engine torpedo shaped racers. The curves, the looks, the excitement, the opulence...



Madeira Y6, Brown
AS141F M. 45 x 8.5 x 42cm, 17.75 x 3.5 x 16.5"



Madeira Y6, BLUE
AS142F M. 45 x 8.5 x 42cm, 17.75 x 3.5 x 16.5"



Madeira Y9, RED
AS140F M. 45 x 8.5 x 42cm, 17.75 x 3.5 x 16.5"



A-Cup Mobile
AS130 M. 93 x 3.5 x 32cm, 36.5 x 1.5 x 12.5"

Four colored 1930s J-Yacht miniatures racing in the air. Made of solid wood and cotton sails. Ever so graceful, even at this size the miniatures are authentic and correct in their details.

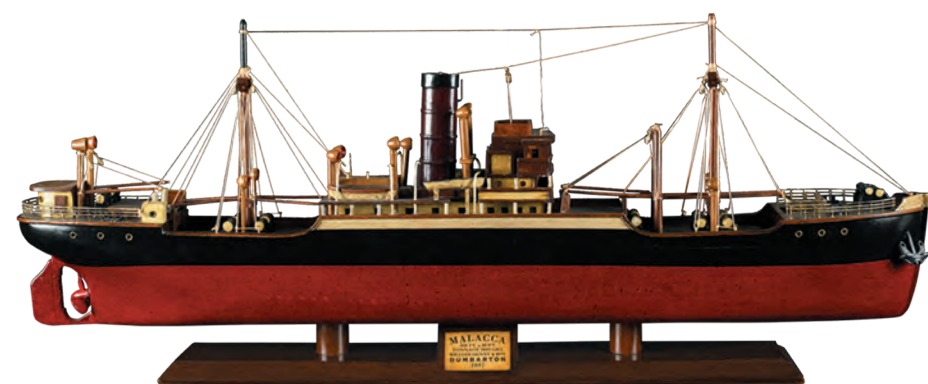


Sunset Sailors, SET OF 4
AS170 M. 28 x 7.5 x 40.5cm, 11 x 3 x 16"

The nicest part of a day on the water is returning to port. Sun low over the horizon, becoming a bit sleepy, ready to dock, take the sails down, stroll home, and enjoy a cold beer. Our wood hand built flotilla of four sailing dinghies features fresh, bright and sunny colors. Display one or a whole set, bathroom, window, bookshelf. Precious and fun.

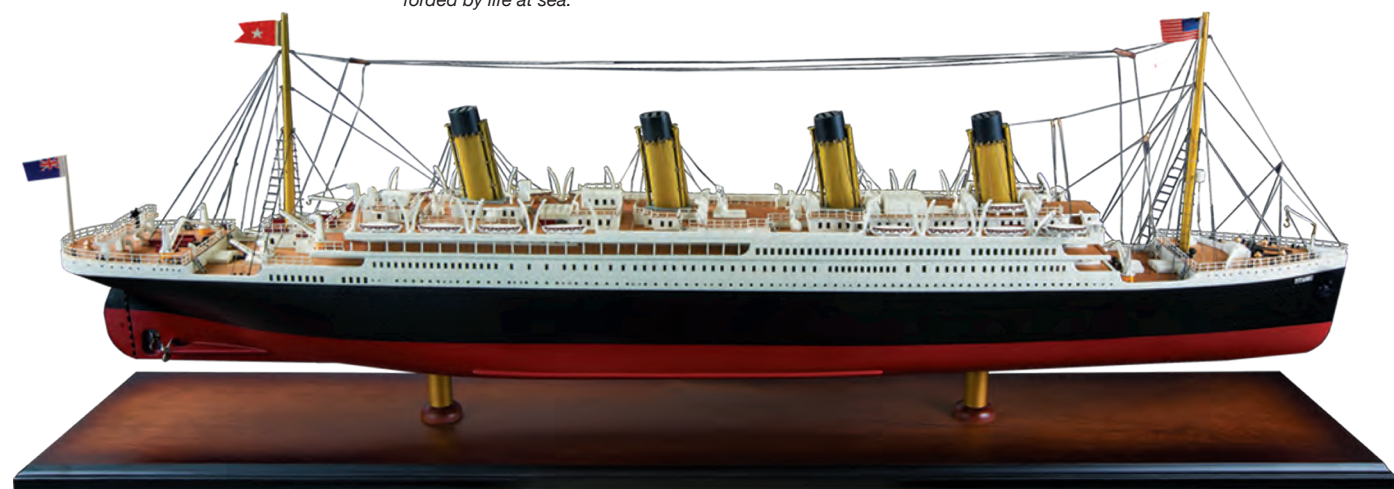


Tramp Steamer 'Rangoon'
AS300 M. 64 x 5.5 x 31.25cm, 25.25 x 2.25 x 12.25"



Tramp Steamer 'Malacca'
AS303 M. 68 x 8 x 27cm, 26.75 x 3.25 x 10.75"

For many shipping lines, filling up cabin space was important as filling the cargo hold. Amenities ranged all the way up to first class staterooms with luxurious dining halls where elaborate cuisine was shared at table with the ship's officers. This was the mode of travel favored by writers, and anyone who sought to escape from the busyness of life and savor the solitude afforded by life at sea.



Titanic
AS083 M. 91.5 x 18 x 36cm. 36 x 7 x 14.25"

Once the largest man-made moving object on Earth, with interiors inspired by the London Ritz hotel, its own onboard newspaper and musicians with a repertoire of 352 songs, the RMS Titanic represented the pinnacle of endeavour and luxury. This attentively crafted model recreates the vessel in fascinating external detail.



To protect them against the elements, steering wheels are mostly polished or lacquered. This one has kept its natural wooden looks as its one and only purpose is to decorate your space.



Captain's Steering Wheel
WD020 M. 105 x 22 x 44cm, 19.7" x 8.7" x 44.3"



During the 19th century, shipwrights created exact scale half hull models, a construction plan for a ship's hull design and its particular curvature "sheer". These were mounted and displayed in admiralty and shipping offices, and now sell at auction as decorative nautical art.

Clipper Lightning 1854
AS190 M. 94 x 9 cm x 25cm, 37 x 3.5 x 10"



Clipper Argonaut 1876
AS191 M. 94 x 9 cm x 25cm, 37 x 3.5 x 10"



Clipper Thermopylae 1868
AS192 M. 94 x 9 cm x 25cm, 37 x 3.5 x 10"



Lifeboat Oar
FE103 M. 184.25 x 14 x 4cm,
72.5 x 5.5 x 1.5"



Oxford Varsity
FE104 M. 235 x 16.5 x 5cm,
92.5 x 6.5 x 2"

Tender Oar, RED
FE105 M. 182 x 13.5 x 8cm,
71.75 x 5.25 x 3.25"



Tender Oar, IVORY
FE106 M. 182 x 13.5 x 8cm,
71.75 x 5.25 x 3.25"

Oars make a large statement home décor pieces, which work in many environments. Place them in your beach house on your porch. Frame a doorway or place above the kitchen worktop to hang pots and pans.



Royal Barge Rack
FE128 M. 90 x 9 x 7 cm, 35.5 x 3.5 x 2.75"

Royal Barge rack holds 5 Oars. Great for store display.



Royal Barge Oars

Royal Barge Oar #1 FE123 M. 14 x 4.5 x 144cm, 5.5 x 1.75 x 56.75"	Royal Barge Oar #2 FE124 M. 14 x 4.5 x 144cm, 5.5 x 1.75 x 56.75"	Royal Barge Oar #3 FE125 M. 14 x 4.5 x 144cm, 5.5 x 1.75 x 56.75"	Royal Barge Oar #4 FE126 M. 15 x 4.2 x 117.5cm, 6 x 1.75 x 46.25"	Royal Barge Oar #5 FE127 M. 15 x 4.2 x 117.5cm, 6 x 1.75 x 46.25"
---	---	---	---	---



Red Oar
FE119 M. 120 x 9 x 15cm, 47.25 x 3.5 x 6"



Black Oar
FE120 M. 120 x 9 x 15cm, 47.25 x 3.5 x 6"

We've used signal flag designs on oar paddles to make attractive, sturdy coat racks. Four wood knobs for hanging coats and packs. Perfect for lil' captains to hang their cap.



Oxford Varsity Coat Stand
FE117 M. 68.5 x 68.5 x 187.5cm,
27 x 27 x 73.75"

Three oars make up a sturdy and attractive coat stand. Brass hardware, turned finial, rattan key & change basket. Practical, attractive, colorful. Assembly required.